

Augers



Brandt

Transport Augers

Working without the Worry

Extended Life Flighting

Brandt's flighting is more durable because it's thicker and stronger at the edge, where most of the wear occurs. Extended Life flighting with an extra thick edge ensures that Brandt Augers are more reliable and longer lasting.

Heat Treated Sprockets

Brandt Transport Augers feature a heavy-duty, chain drive and heat-treated sprockets for maximum durability.

Keep Running

With an available bright triple halogen lighting package you still can get the job done after dark. One light is mounted at the discharge; one above the engine and another on the intake. Allowing you to easily place your auger spout for unloading, operate the engine and see where you are loading. A sealed light switch is located conveniently beside the engine for easy access.

Sizes Available

Standard

8": 35', 40', 45', 50'

10": 35', 40', 50'

13": 40'

Supercharged

8": 37', 42', 47', 52', 57', 62'

10": 35'



EZMOVE

The Brandt EZMOVE Auger Mover allows the operator to effortlessly move augers around the yard with improved control. The Brandt EZMOVE Auger Mover fits all sizes and lengths of Brandt Standard and Supercharged augers.

Less Effort, More Results

Effortless Hydraulic Power Steering

The exclusive joystick controlled power steering delivers improved control with less effort. Steering tires are in line to the walking beam which provides better steering and equal turning circles.

Easy to Use

- Mover speed can be precisely adjusted using a simple ball valve control.
- Standard hydraulic winch and intake lift cylinder
- Welded ring gear on rim for maximum reliability.
- Hydraulic lift by-pass system to prevent accidental tube damage.
- The high flow pump provides enough extra capacity to power most bin sweeps.



Available Options



Hydraulic Auger Winch



Reversible Gearbox



Electric Clutch

Drive Systems



Tube Mount Electric Drive



PTO Drive



Gas or Diesel Drive

Supercharged Intake

Supercharged Transport Augers have an increased capacity of over 23% by using a larger diameter intake on all augers. The intake is enlarged to keep the tube full and maximize capacity.

Maximized Capacity

Supercharged Transport Augers are designed to exceed the rigorous demands of agriculture, with industry leading capacity. An oversized intake provides increased capacity so you can move grain faster. Whether you want to move grain from the truck to the bin, or the bin to the truck, long lasting Supercharged Transport Augers are designed to perform.



Supercharged Intake



Quick Release Hitch

Swing Away Augers

Durability You Can Count On

When loading grain into the bin, Brandt Swing Away Augers offer the highest productivity for your farm.

Easy Access Cleanout Doors

The transition has two large access doors, and our unique, totally sealed transition spout that keeps product in and moisture out.

Chain Coupler

All Brandt Swing Away Augers are designed with a chain coupler between the swing tube flighting and gearbox for trouble free maintenance. The coupler absorbs shock and protects the gearbox increasing its longevity.

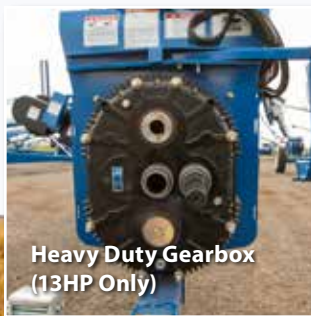
Low Profile, Self Levelling Hopper

All Brandt Swing Away Hoppers features two 6 inch horizontal feed augers with a low profile design to maximize clearance under the trailer. The hopper provides a large area to fill with grain for easy positioning under trailer hoppers and also features "flat-free" tires for trouble free use during harvest.

Work with Ease

Scissor Lift

The heavy duty scissor lift provides maximum reach and low transport height, which ensures safe transport at all times. Brandt Swing Away Augers come standard with dual hydraulic rams (single on 1060XL & 1070XL) and feature undercarriages made of strong square tubing to improve safety and stability.

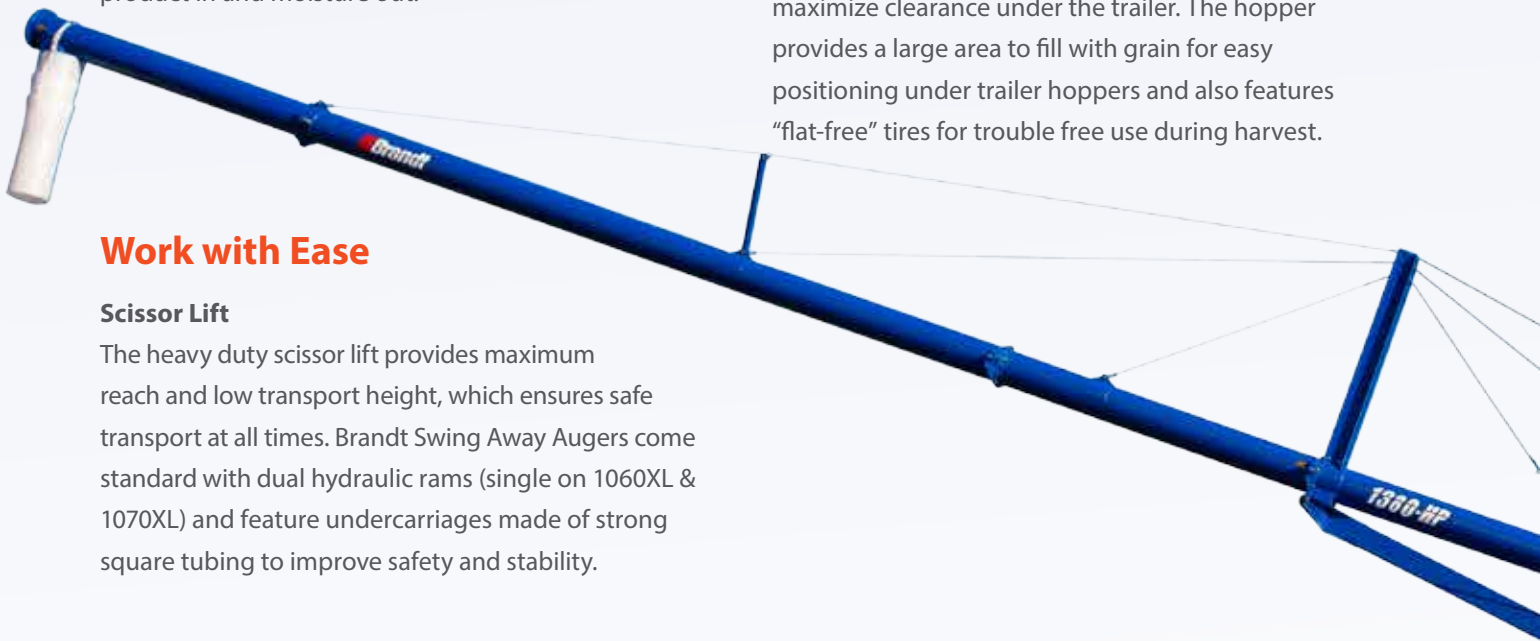


Sizes Available

10XL: 60', 70', 80'

13XL: 70', 80', 90'

13HP: 70', 80', 90', 110"



EZSWING

Featuring efficient TwinDrive, the Brandt EZSWING hopper mover is available in hydraulic or electric drive to make running your Swing Away Auger a breeze.

Efficient Traction

The TwinDrive system uses two high torque motors directly power hopper mounted drive wheels for maximum leverage, traction, and stability.

Easy to Control

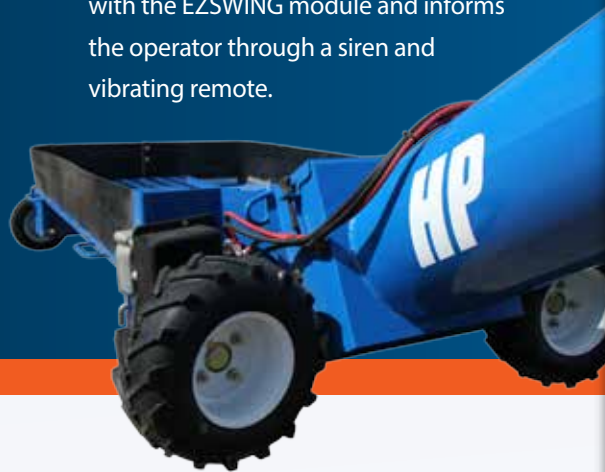
The EZSWING system features a long range remote easily synchronized with the push of a button. The intuitive controls allow easy operation from the seat of the cab.

Durable and Safe

The EZSWING system is built around a heavy-duty power module with a durable built-in keypad and a safety alert system.

Worry-Free Bin Filling

With the available integrated full bin alarm, the adjustable sensor wirelessly communicates with the EZSWING module and informs the operator through a siren and vibrating remote.

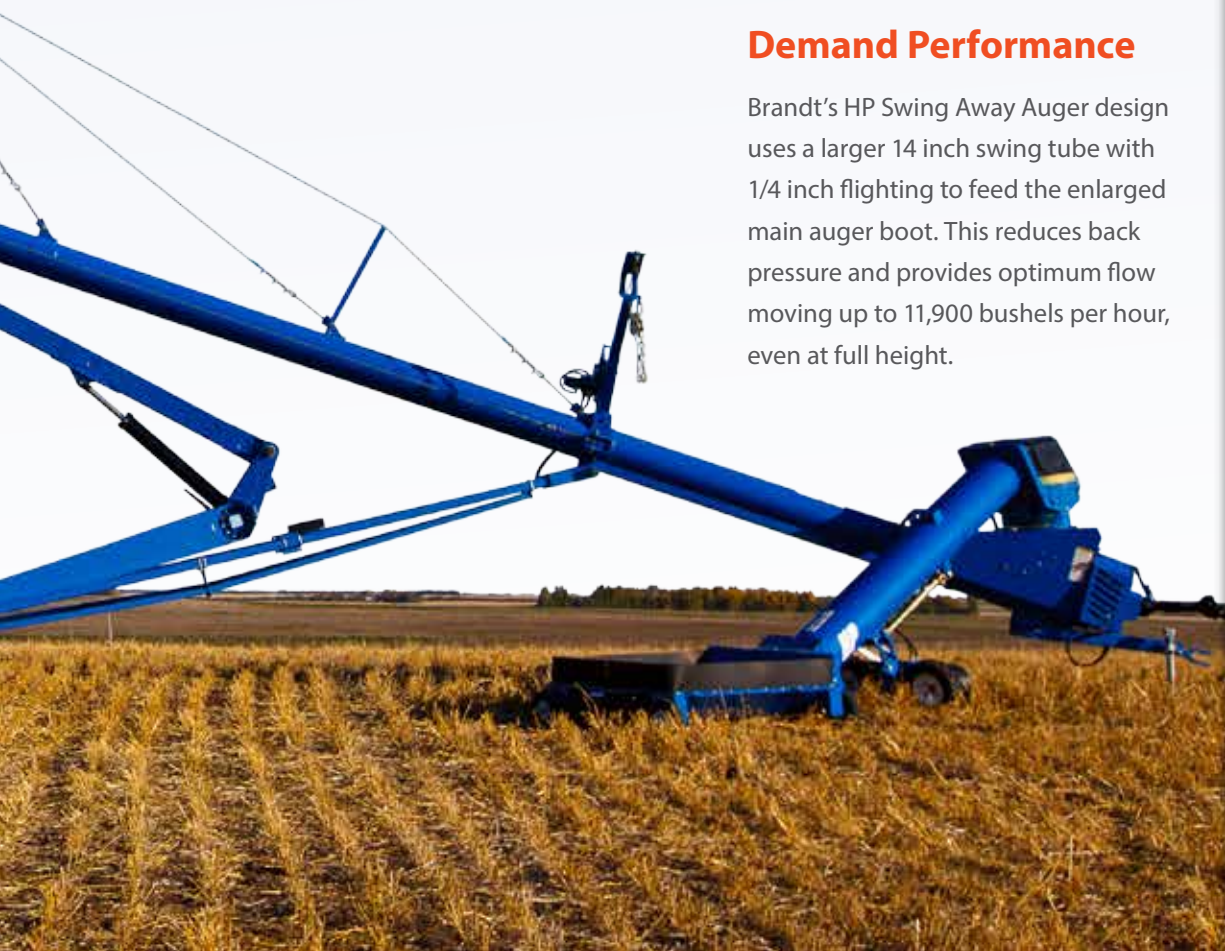


HP Swing Away Augers

If you need to move a lot of grain in a hurry, turn to a HP Swing Away Auger. With 60% higher capacity than regular 13 inch augers, the High Performance Swing Away Auger keeps your harvest moving and allows you to get back to the combine for the next load faster.

Demand Performance

Brandt's HP Swing Away Auger design uses a larger 14 inch swing tube with 1/4 inch flighting to feed the enlarged main auger boot. This reduces back pressure and provides optimum flow moving up to 11,900 bushels per hour, even at full height.



Available Options

- Right Angle Drive
- Reversing Kit
(Standard on HP models)
- Camera Kit
- Corn Screens (10XL Only)



Chain Flex Coupler



Low Profile Hopper



Working Light Kit



Safety Light Kit



Hydraulic or Electric Winch



Open Top Hopper

Standard Transport Augers

	835	840	845	850	1035	1040	1050	1340
Performance								
Capacity ¹ (bushels per hour)	3,000	3,000	3,000	3,000	4,400	4,400	4,400	8,500-9,000
Recommended Horsepower - Electric	7.5	7.5	7.5	10	20	20	30	30
Recommended Horsepower - Gas/Diesel/PTO ²	14	16	18	20	35	35	35	49
Dimensions								
Diameter	8"	8"	8"	8"	10"	10"	10"	13"
Length	35'	40'	45'	50'	35'	40'	50'	40'
Height - Lowered	8' 11"	10' 1"	12' 8"	12'	11' 11"	10' 8"	11' 6"	11' 6"
Height - Halfway	17' 2"	18' 4"	21' 4"	23' 3"	16' 10"	19' 6"	24' 0"	16' 10"
Height - Raised	23'	26' 8"	30'	33' 5"	17' 5"	26' 5"	33' 8"	21'
Reach - Lowered	13'	17' 4"	19'	21' 3"	16' 11"	15' 6"	20' 2"	21' 3"
Reach - Halfway	11' 10"	15' 3"	16' 11"	19' 5"	11' 5"	12' 8"	17' 2"	15' 7"
Reach - Raised	10' 5"	11' 4"	13' 7"	16'	12' 5"	12'	16' 7"	15' 5"
Reach - Intake	10' 3"	11' 4"	11' 5"	13' 9"	10' 2"	13' 6"	17' 3"	13'
Tube Thickness	14 ga	14 ga	14 ga	14 ga	13 ga	14 ga	14 ga	12 ga
Flighting - Intake	1/4"	1/4"	1/4"	1/4"	3/16"	3/16"	3/16"	1/4"
Flighting - Main	10 ga	10 ga	10 ga	10 ga	7 ga	7 ga	7 ga	1/4"
Core Diameter	1.5"	1.5"	1.5"	1.5"	2.0"	2.0"	2.0"	3.0"
Top Drive Chain	Single #60	Double #60	Double #60	Double #60	Single #80	Single #80	Single #80	Single #80
Weight	1,100 lb	1,350 lb	1,440 lb	1,610 lb	1,100 lb	1,250 lb	1,625 lb	2,079 lb

XL Swing Away Augers

	1060XL	1070XL	1080XL	1370XL	1380XL	1390XL
Performance						
Capacity* (bushels per hour)	5,000-6,000	5,000-6,000	5,000-6,000	7,000-8,000	7,000-8,000	7,000-8,000
Minimum Tractor Horsepower	55	65	75	105	115	125
Dimensions						
Diameter	10"	10"	10"	13"	13"	13"
Swing Away Diameter	10"	10"	10"	13"	13"	13"
Length	60'	70'	80'	70'	80'	90'
Height - Lowered	10' 6"	11' 11"	11' 9"	9' 6"	10' 9"	11' 11"
Height - Raised	41' 1"	47' 5"	54' 3"	48' 7"	55' 3"	61' 11"
Reach - Lowered	29' 2"	39'	40'	33' 3"	43' 1"	53'
Reach - Raised	19' 2"	26' 10"	27' 6"	22' 9"	29' 6"	36' 11"
Transport Length	62'	71' 10"	81' 10"	72' 9"	82' 8"	92' 9"
Transport Height	11' 10"	13' 3"	13' 3"	13' 2"	13' 2"	13' 8"
Wheel Track Width	133"	133"	147"	146"	160"-188"	160"-188"
Tube Thickness	13 ga	13 ga	13 ga	12 ga	12 ga	12 ga
Flighting - Main	3/16"	3/16"	3/16"	1/4"	1/4"	1/4"
Flighting - Swing Away	3/8"	3/8"	3/8"	3/8"	3/8"	3/8"
Core Diameter	2.0"	2.0"	2.0"	3.0"	3.0"	3.0"
Lower Bearing Size	1.375"	1.375"	1.375"	1.75"	1.75"	1.75"
Gearbox Shaft Diameter	1.25"	1.25"	1.25"	1.75"	1.75"	1.75"
Weight - Hitch	500 lb	300 lb	1,040 lb	1,500 lb	1,270 lb	1,050 lb
Weight - Total	3,460 lb	3,600 lb	4,380 lb	6,300 lb	6,900 lb	7,100 lb
Undercarriage						
Lift Mechanism	Scissor	Scissor	Scissor	Scissor	Scissor	Scissor
Frame Arms	2"x6"x3/16"	2"x6"x3/16"	4"x8"x3/16"	Fabricated	Fabricated	Fabricated
Axle	4"x4"x1/8"	4"x4"x1/8"	4"x4"x3/16"W	4.5"x4.5"x3/16"W	4.5"x4.5"x3/16"W	4.5"x4.5"x3/16"W
Hydraulic Cylinder Size	3.5"x30"	4"x30"	4"x30"	4"x36"	5"x36"	5"x36"
Number of Hydraulic Cylinders	1	1	1	2	2	2
Hydraulic Requirements	1,900 psi	1,800 psi	1,500 psi	1,050 psi	1,100 psi	1,600 psi
Tire Size	ST205/75R15	ST205/75R15	ST235/75R15	ST225/75R15	ST235/85R16	ST235/85R16
Tire Ply Rating	6 Ply	6 Ply	8 Ply	8 Ply	8 Ply	8 Ply
Self-Leveling Swing Away Hopper						
Length x Width x Height	70"x40"x10"	70"x40"x10"	70"x40"x10"	70"x40"x10"	70"x40"x10"	70"x40"x10"
Height w/ Extention	17"	17"	17"	17"	17"	17"
# of Horizontal Flights	2	2	2	2	2	2
# of Wheels	4	4	4	4	4	4
Wheel Size	10"	10"	10"	10"	10"	10"

Product specifications and configuration are subject to change without prior notice. Before ordering, please ask your Brandt dealer for the latest information. The manufacturer reserves the right to make changes at any time, without notice, to prices, specification and models.

© Brandt Industries Ltd. All rights reserved. Brandt, Brandt logo, and GrainDeck are trademarks of Brandt Industries Ltd, used under license. This product is covered by one or more of the following patents and patent applications: CA2254384 and US 6119847.

Supercharged Transport Augers

	8375C	8425C	8475C	8525C	8575C	8625C	10355C
Performance							
Capacity ¹ (bushels per hour)	3,700	3,700	3,700	3,700	3,700	3,700	6,200
Recommended Horsepower - Electric	10	12.5	15	15	20	20	30
Recommended Horsepower - Gas/Diesel/PTO ²	18	20	23	25	35	35	35
Dimensions							
Diameter	8"	8"	8"	8"	8"	8"	10"
Intake Diameter	9"	9"	9"	9"	9"	9"	11"
Length	37'	42'	47'	52'	57'	62'	35'
Height - Lowered	9' 1"	9' 7"	12' 2"	11' 4"	12'	12' 3"	8' 11"
Height - Halfway	16' 8"	18' 8"	21' 10"	22' 3"	24' 4"	27'	16' 1"
Height - Raised	23' 11"	27' 11"	30' 7"	33' 2"	37' 5"	41' 3"	22' 6"
Reach - Lowered	13' 10"	17' 4"	18' 8"	21' 2"	24' 3"	28' 1"	12' 4"
Reach - Halfway	12' 7"	15' 7"	17' 2"	19' 7"	22' 6"	23' 10"	11' 5"
Reach - Raised	11' 5"	12' 2"	14' 3"	16' 10"	16' 4"	18' 10"	10' 3"
Reach - Intake	11'	12' 1"	12' 6"	14' 8"	16' 0"	17' 1"	11' 6"
Tube Thickness	14 ga	14 ga	14 ga	14 ga	14 ga	14 ga	14 ga
Flighting - Intake	1/4"	1/4"	1/4"	1/4"	1/4"	1/4"	5/16"
Flighting - Main	10 ga	10 ga	10 ga	10 ga	10 ga	10 ga	7 ga
Core Diameter	1.5"	1.5"	1.5"	1.5"	1.5"	1.5"	2.0"
Top Drive Chain	Single #60	Double #60	Double #60	Double #60	Single #80	Single #80	Single #80
Weight	850 lb	1,000 lb	1,200 lb	1,400 lb	1,600 lb	1,800 lb	1,125 lb

HP Swing Away & Open Top Augers

	1370HP	1380HP	1390HP	13110HP
Performance				
Capacity ¹ (bushels per hour)	11,900	11,900	11,900	11,900
Recommended Horsepower - HP	140	160	180	200
Recommended Horsepower - Open Top	105	125	140	175
Tractor PTO RPM	1,000	1,000	1,000	1,000
Dimensions				
Diameter	13"	13"	13"	13"
Swing Away Diameter	14"	14"	14"	14"
Length	70'	80'	90'	110'
Height - Lowered	9' 6"	10' 9"	11' 11"	12' 10"
Height - Raised	48' 7"	55' 3"	61' 11"	73'
Reach - Lowered	33' 3"	43' 1"	53'	61' 9"
Reach - Raised	22' 9"	29' 6"	36' 11"	46' 2"
Transport Length	72' 9"	82' 8"	92' 9"	112' 6"
Transport Height	13' 2"	13' 2"	13' 8"	14' 8"
Wheel Track Width	146"	160"-188"	160"-188"	160"-196"
Tube Thickness	12 ga	12 ga	12 ga	12 ga
Flighting - Main	1/4"	1/4"	1/4"	1/4"
Flighting - Swing Away	3/8"	3/8"	3/8"	3/8"
Core Diameter	3.0"	3.0"	3.0"	3.0"
Lower Bearing Size	1.75"	1.75"	1.75"	1.75"
Gearbox Shaft Diameter	1.75"	1.75"	1.75"	1.75"
Weight - Hitch	1,700 lb	1,470 lb	1,210 lb	1,740 lb
Weight - Total	6,500 lb	7,100 lb	7,300 lb	9,500 lb
Undercarriage				
Lift Mechanism	Scissor	Scissor	Scissor	Scissor
Frame Arms	Fabricated	Fabricated	Fabricated	Fabricated
Axle	4.5"x4.5"x3/16"W	4.5"x4.5"x3/16"W	4.5"x4.5"x3/16"W	4"x6"x3/16"W
Hydraulic Cylinder Size	4"x36"	5"x36"	5"x36"	5"x36"
Number of Hydraulic Cylinders	2	2	2	2
Hydraulic Requirements	1,050 psi	1,100 psi	1,600 psi	1,950 psi
Tire Size	225/75R15	ST235/85R16	ST235/85R16	ST235/85R16
Tire Ply Rating	8 Ply	8 Ply	8 Ply	12 Ply
Self-Leveling Swing Away Hopper				
Length x Width x Height	70"x40"x10"	70"x40"x10"	70"x40"x10"	70"x40"x10"
Height w/ Extension	17"	17"	17"	17"
# of Horizontal Flights	2	2	2	2
# of Wheels	4	4	4	4
Wheel Size	10"	10"	10"	10"

1. Standardized test capacities, actual results vary by crop and moisture conditions. 2. SAE J1940 Gross Engine Horsepower or PTO Rating

Sizing your Auger

Auger Length = [Eave Height (Y) + 1/2 Bin Diameter (X)] x 1.45

Step 1. Determine the distance from the ground to the eave (Y)

Step 2. Determine the diameter (X) of the bin and divide by 2

Step 3. Add (Y) to 1/2 of (X)

Step 4. Multiply the result of Step 3 by 1.45

Step 5. The resulting number is the exact length of auger required (Use the next longer length of Brandt auger available)

Example:

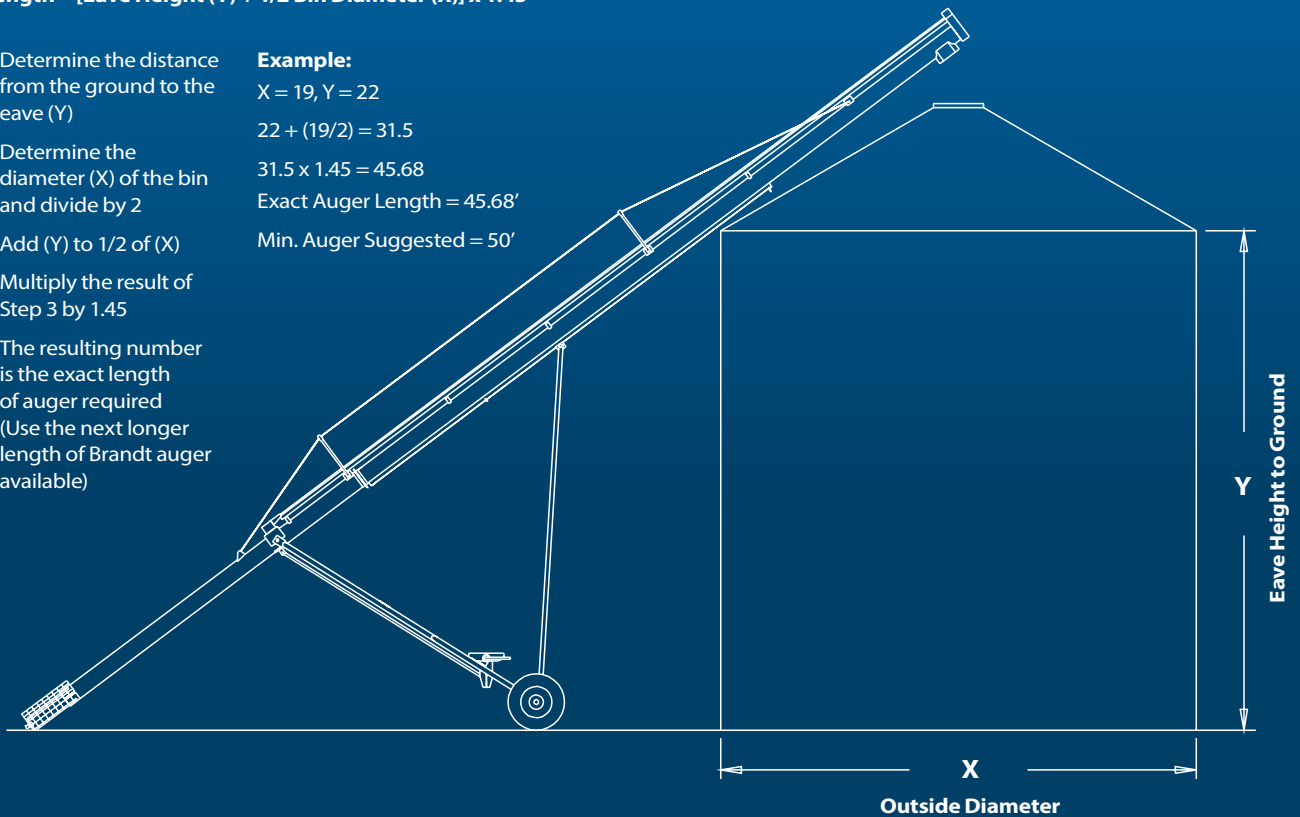
X = 19, Y = 22

$22 + (19/2) = 31.5$

$31.5 \times 1.45 = 45.68$

Exact Auger Length = 45.68'

Min. Auger Suggested = 50'



Contact us for more information or to arrange a demonstration of our products:

Brandt Agricultural Products Ltd
P.O. Box 317, 13th Ave and Pinkie Rd.
Regina, Saskatchewan, Canada S4P 3A1
1-866-4BRANDT Toll Free in US & Canada
1-306-525-1314
agriculture@brandt.ca

Visit www.brandt.ca for a list of local Brandt Equipment Dealers.